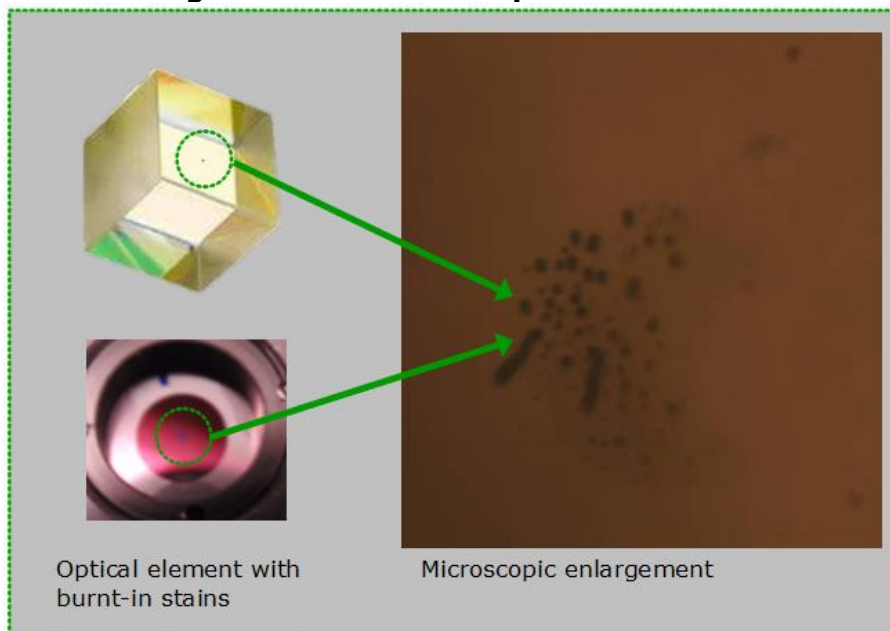


Repair of beamsplitters, optical isolators and waveplates



After some time of exposure light rays and laser beams do leave black, burned-in spots on the optical elements of Isolators, beamsplitters and waveplates. Light transmission rate and laser performance decrease.

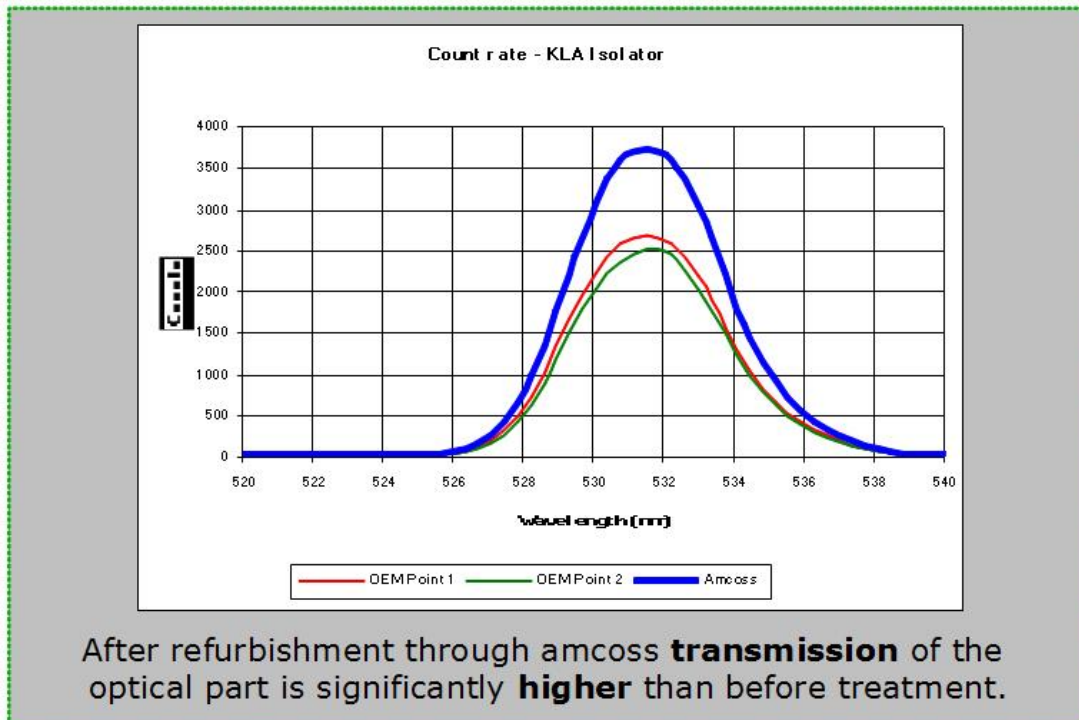
Signs of Wear within optical Elements



Our experts at amcross localize the affected areas and specify the reduced transmission. At first optical elements are being replaced by high-quality spare components. Afterwards the whole unit will be adjusted, so that maximum signal strength, the highest possible transmission rate and an optimal laser position are reached.

Repair of beamsplitters, optical isolators and waveplates

Transmission Comparison of Isolator before and after Repair by amcross



The use of professional measuring equipment at amcross guarantees highest possible accuracy and reliable quality control. Our customers will benefit from enormous savings in comparison to purchasing a new part from an OEM.

