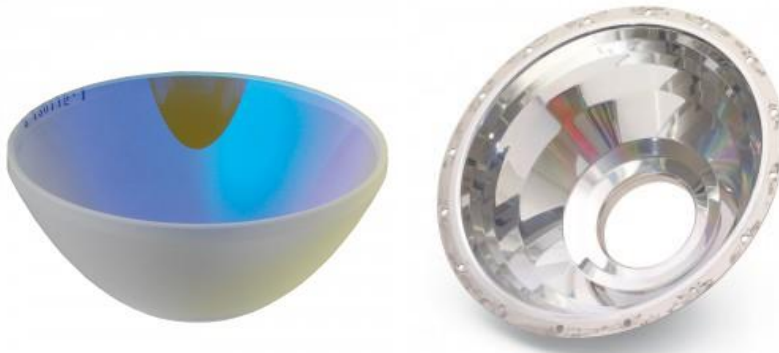
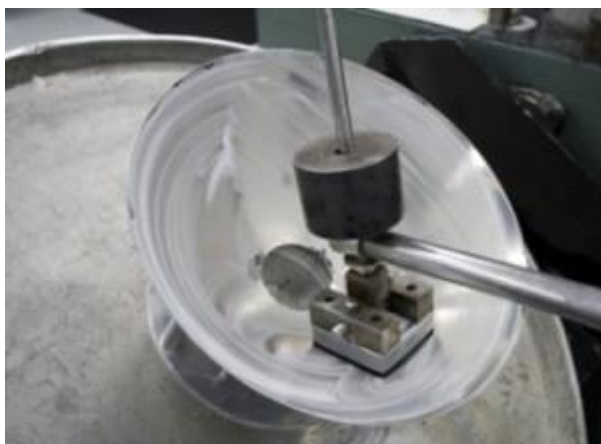


Repair of UV mirror-reflectors



During the UV-curing process solvents and other volatile substances in the protecting layers are vaporising due to the high temperatures in the lamp. These substances condense on the reflector surface and build up an unwanted layer. This layer then reduces UV reflectivity of the coating and brings down uniformity. As a result: refurbishment becomes necessary!

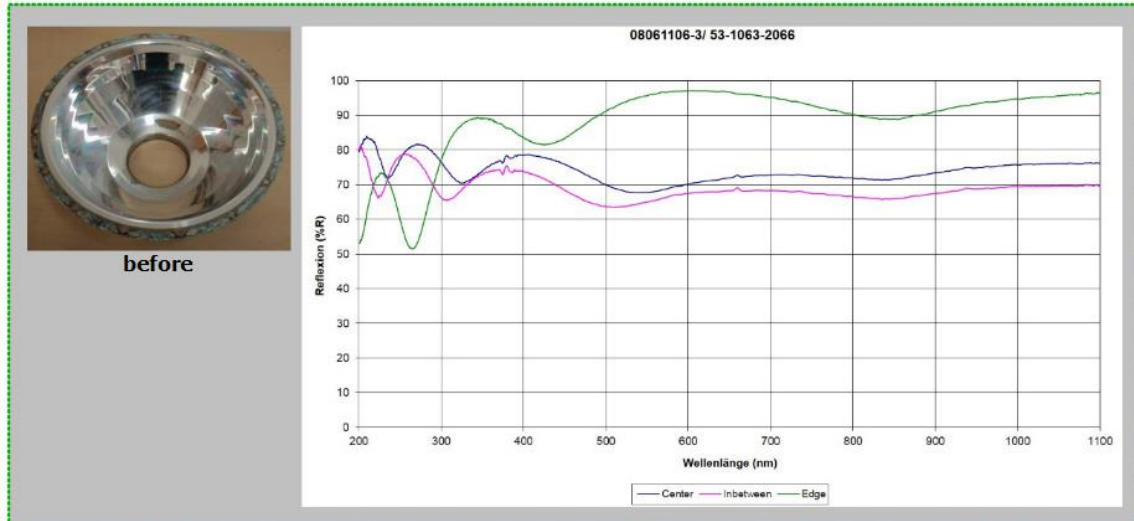


amcoat strip-coats, polishes, cleans and re-coats. After refurbishment we carry out measurements which show that the coating and – as a consequence reflectivity – are extremely homogenous again. Reflectivity increases dramatically and intensity, uniformity and life-span are significantly going up.

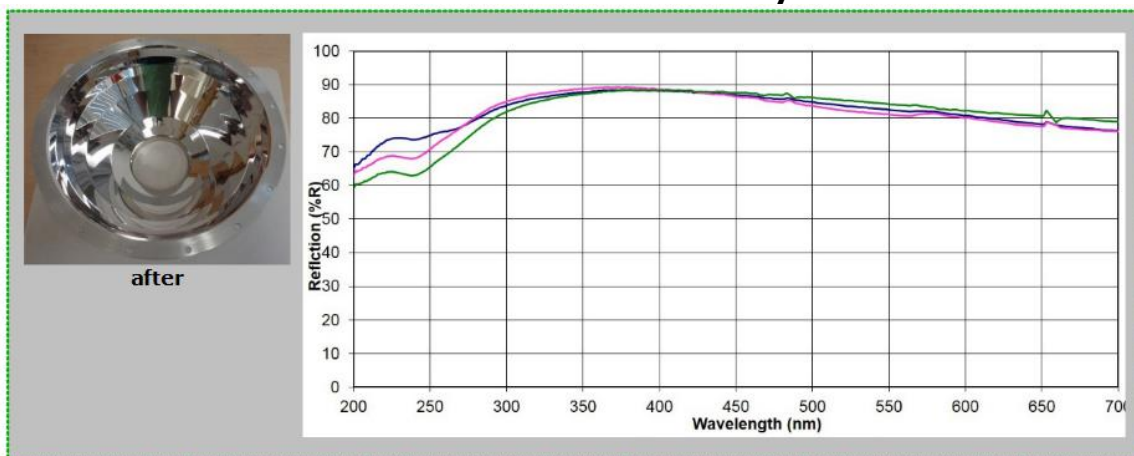
Repair of UV mirror-reflectors

Example: comparative measurements for Axcellis Reflector

Reflection BEFORE Refurbishment by amcross

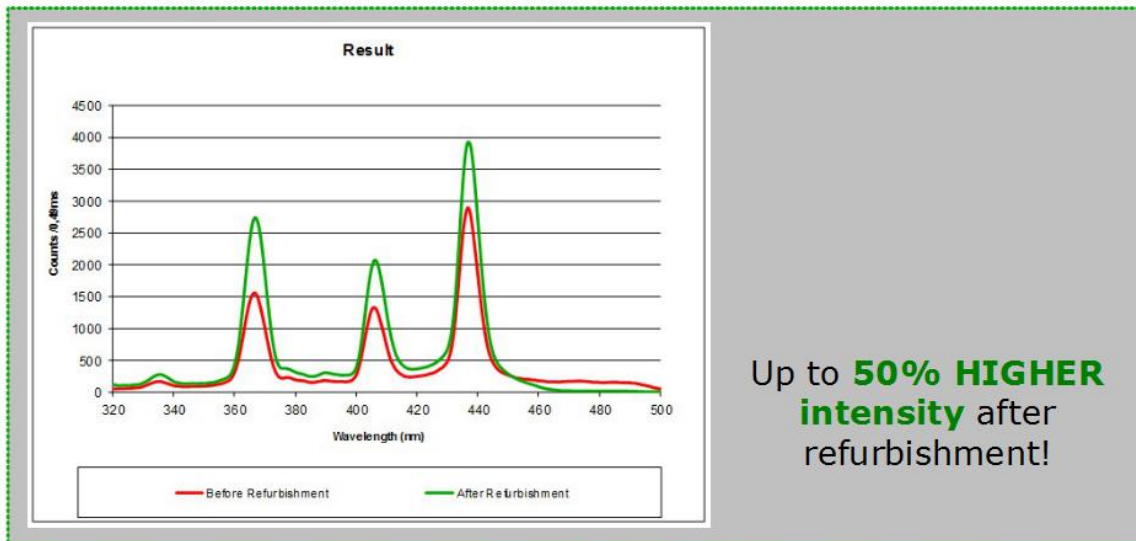


Reflection AFTER Refurbishment by amcross




Repair of UV mirror-reflectors

Intensity BEFORE and AFTER Refurbishment by amcross



amcross inspection-/test report

	Datum:27.8.2013	Anwender:	Teil Nr.:Ellipsoid Lamphous TI
	Zeit:08:59:53		
	KMG:	Teilename:	Kommentar:CT0024

1:	ELEM#	SOLLWERT	ISTWERT	U_TOL	O_TOL	ABW	AUSSERH.	TENDENZ
	EBENE GRANIT [MCS9]							
Z		0.000	0.000	-0.200	0.200	0.000		█

2:	ELEM#	SOLLWERT	ISTWERT	U_TOL	O_TOL	ABW	AUSSERH.	TENDENZ
	EBENE HOHE [MCS9]							
Z		45.840	45.840	-0.200	0.200	0.000		█

3:	ELEM#	SOLLWERT	ISTWERT	U_TOL	O_TOL	ABW	AUSSERH.	TENDENZ
	Auss. KREIS AUßEND [MCS9]							
X			0.000					
Y			-0.000					
Z			44.390					
Dur			105.899					
Rundheit			0.014		0.200			█

4:	ELEM#	SOLLWERT	ISTWERT	U_TOL	O_TOL	ABW	AUSSERH.	TENDENZ
	Innen KREIS INNEND [MCS9]							
X		-0.082	-0.082	-0.200	0.200	0.000		█
Y		0.066	0.066	-0.200	0.200	0.000		█
Dur		30.304	30.304	-0.500	0.500	0.000		█
Rundheit			0.012		0.200			█

5:	ELEM#	SOLLWERT	ISTWERT	U_TOL	O_TOL	ABW	AUSSERH.	TENDENZ
	Innen ELIPSE EL1 [MCS9]			x=0 (10MP)				
X		-0.006	-0.006	-0.200	0.200	0.000		█
Y		-0.196	-0.196	-0.200	0.200	0.000		█
Z		122.716	122.716	-0.200	0.200	0.000		█
LÄNGE		247.513	247.513	-0.200	0.200	0.000		█
BREITE		129.563	129.563	-0.250	0.500	0.000		█

6:	ELEM#	SOLLWERT	ISTWERT	U_TOL	O_TOL	ABW	AUSSERH.	TENDENZ
	Innen ELIPSE EL2 [MCS9]			y=0 (12MP)				
X		-0.034	-0.034	-0.200	0.200	0.000		█
Y		0.008	0.008	-0.200	0.200	0.000		█
Z		123.479	123.479	-0.200	0.200	0.000		█
LÄNGE		249.061	249.061	-0.200	0.200	0.000		█
BREITE		129.921	129.921	-0.250	0.500	0.000		█